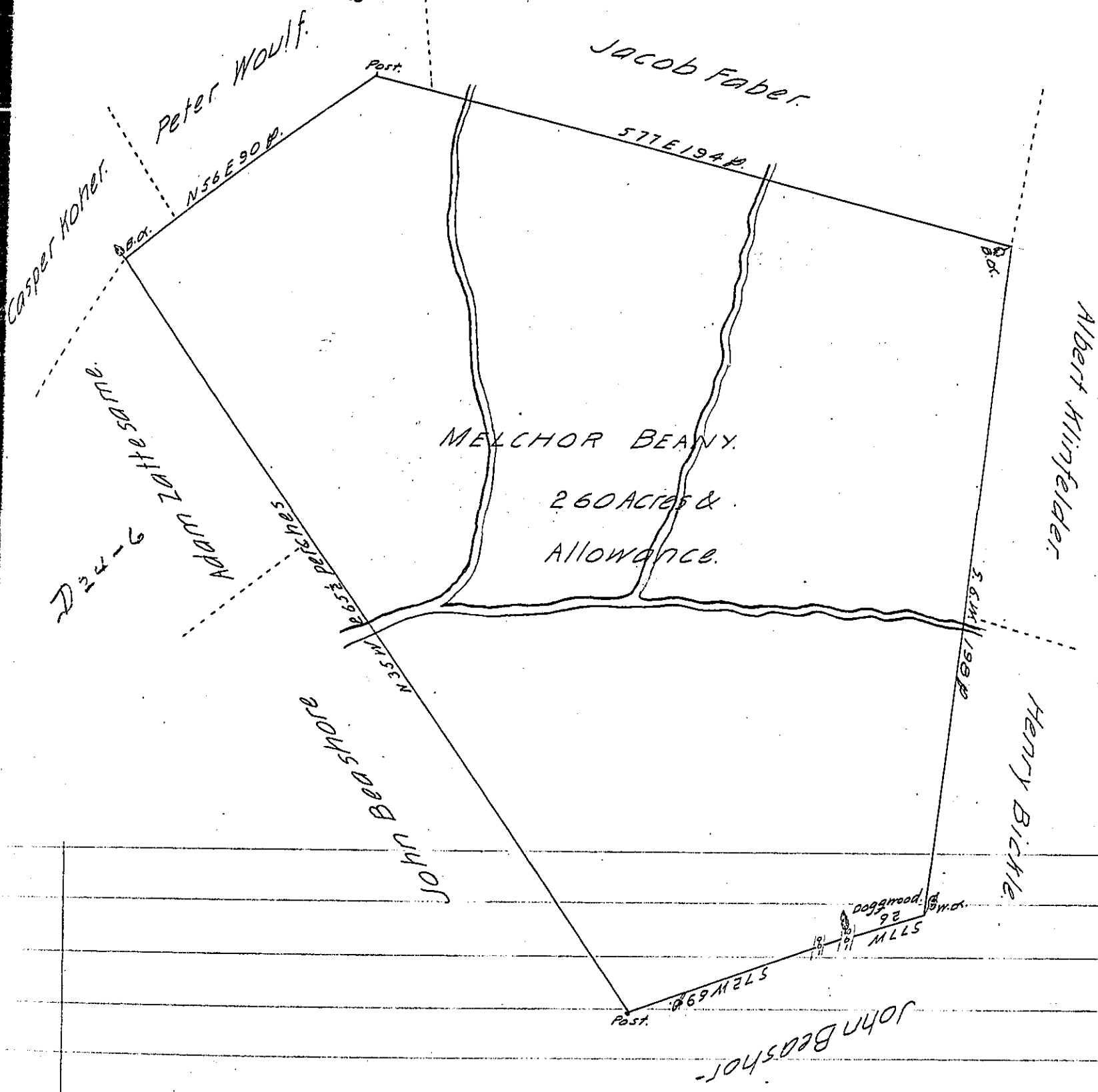


7-173



By Virtue of a Warrant dated the Fifteenth Day of November 1787  
 Surveyed the first day of December 1787 To Melchor Beany the above  
 Described Tract of Land situate In Bethel Township Dauphin  
 County Containing Two Hundred and Sixty Acres and Allowance  
 of Six per cent for roads &c.

Thomas Clark D. S.

To John Lukens, Esquire  
 Surveyor General of Pennsylvania

IN TESTIMONY that the above is a copy of the original remaining on file in  
 the Department of Internal Affairs of Pennsylvania, made  
 conformably to an Act of Assembly approved the 16th day of  
 February, 1833, I have hereunto set my Hand and caused  
 the Seal of said Department to be affixed at Harrisburg,  
 this twenty-fourth day of May 1904

*George D. Brown*  
 Secretary of Internal Affairs.